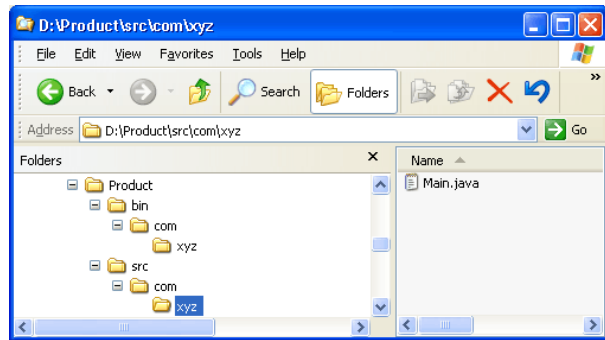


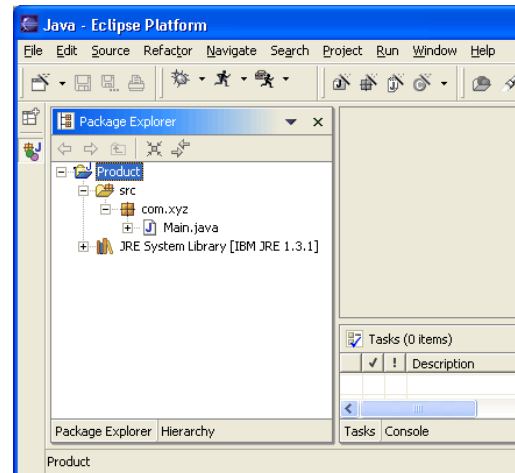
## Detecting existing layout

START: The source files for the company's product are laid out in one directory "src" and class files are output in another directory "bin":

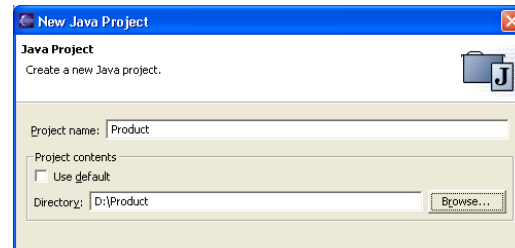


END: You'll have a Java project with a "src" folder which contains the sources of the "Product" directory.

*Note:* This solution creates a ".project" file and a ".classpath" file in the "Product" directory. If you do not wish to have these files in the "Product" directory, you should use linked folders as shown in the Sibling products in a common source tree section.



On the next page, type "Product" in the **Project name** field. Uncheck **Use default**. Click **Browse...** and choose the "Product" directory.

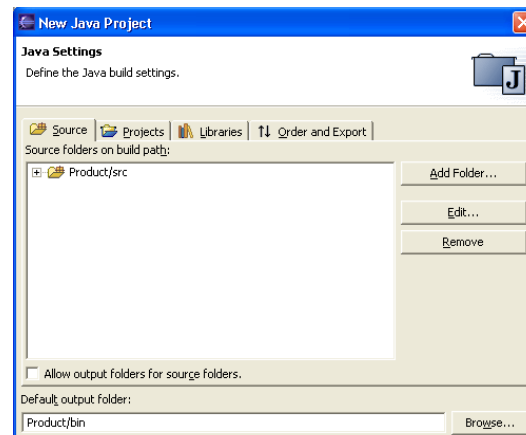


Click **Next**. Ensure that the source and output folders are detected.

NOTE: The auto-detection works only if the source files contain the correct package statement, i.e. for "Main.java":

```
package com.xyz;
```

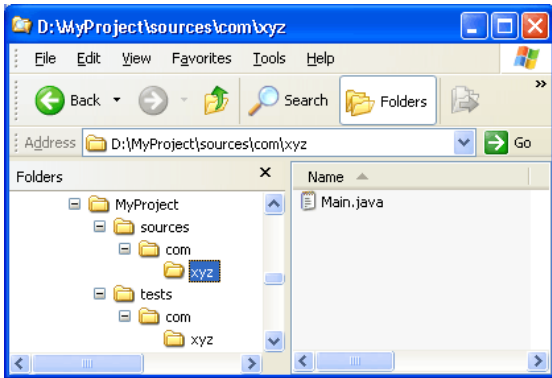
*Warning:* If the preference **Window > Preferences > Java > Compiler > Build Path > Scrub output folder on full build** is checked, clicking **Finish** will scrub the "bin" directory in the file system before generating the class files.



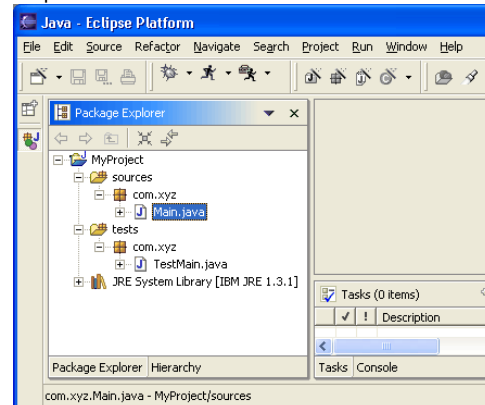
Click **Finish**.

## Organizing sources

START: You will create a new Java project and organize your sources in separate folders. Let's assume you want to put your sources in one folder and your tests in another folder:



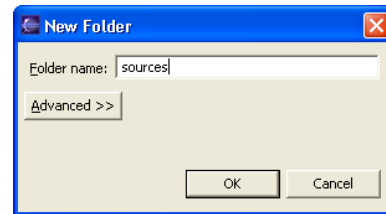
END: You now have a Java project with a "sources" and a "tests" folders. You can start adding classes to these folders or you can copy them using drag and drop.



On the **next** page, type "MyProject" in the **Project name** field and click **Next**.

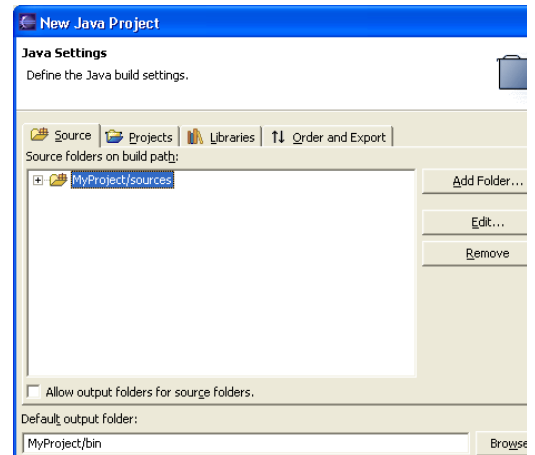
Click **Add Folder...**. On the next dialog, click **Create New Folder...**

Type "sources" in the **Folder name** field.

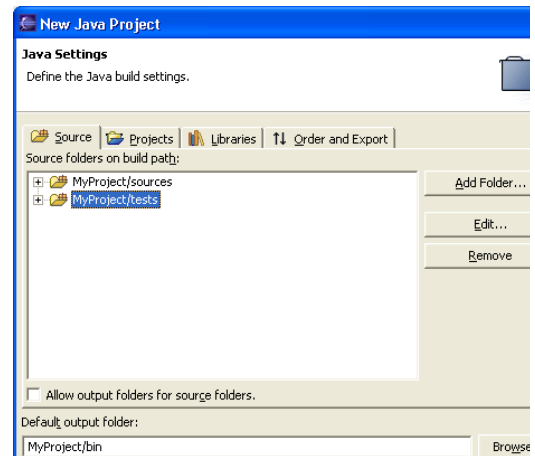


Click **OK** twice to close the two dialogs.

You will be prompted whether or not to remove the project as a source folder and update the build output folder to "MyProject/bin". The builder will write the generated .class files to the output folder. Click **Yes**

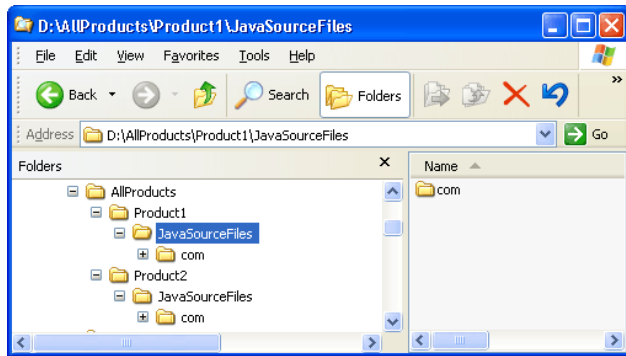


To create the "tests" folder, repeat steps 2 to 5. Then click **Finish**.

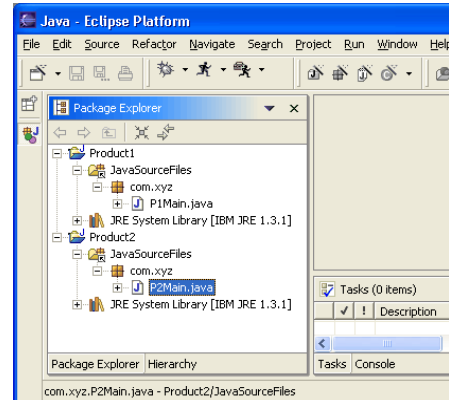


## Sibling products in a common source tree

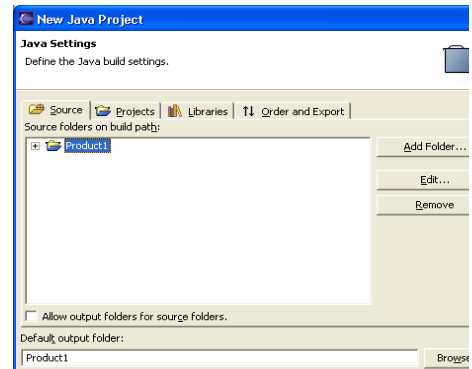
**START:** The source files for the company's products are laid out in one big directory that is version and configuration managed outside Eclipse:



**END:** You now have two Java projects which respectively contain the sources of "Product1" and "Product2".



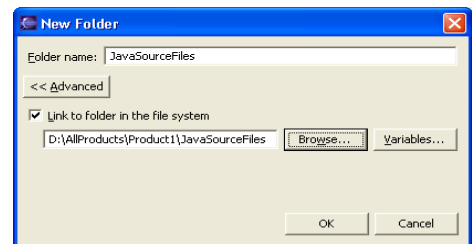
On the next page, type "Product1" in the **Project name** field. Click **Next**.



Select "Product1" source folder and click **Edit...**

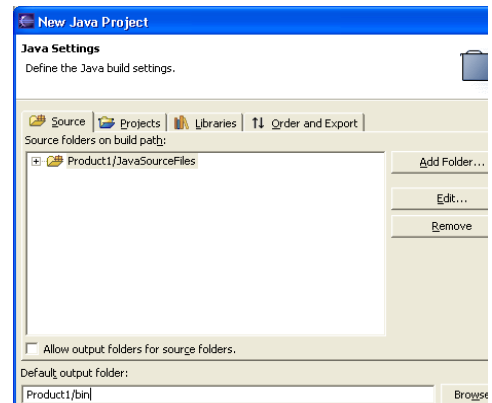
Click **Create New Folder...**. Type "JavaSourceFiles" in the **Folder name** field.

Click **Advanced**. Check **Link to folder in the file system**. Click **Browse...** and choose the "JavaSourceFiles" directory in "Product1".



Click **OK** twice to close the two dialogs.

Type "Product1/bin" in the **Default output folder** field.

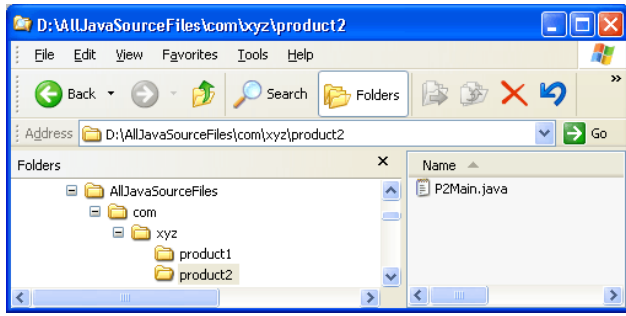


Click **Finish**.

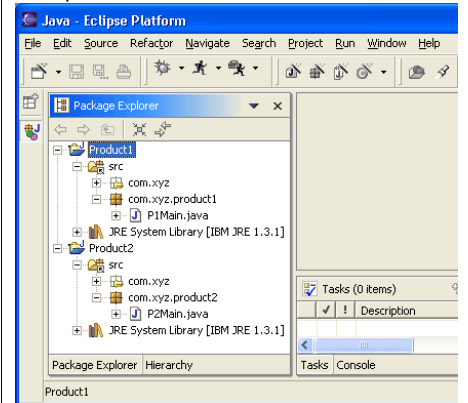
Repeat these steps for "Product2".

## Overlapping products in a common source tree

START: The Java source files for the company's products are all held in a single package directory like this:



END: You now have two Java projects, which respectively contain the sources of "product1" and "product2".

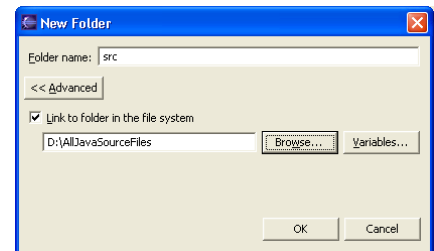


On the next page, type "Product1" in the **Project name** field. Click **Next**.

Select "Product1" source folder and click **Edit...**

Click **Create New Folder....** Type "src" in the **Folder name** field.

Click **Advanced**. Check **Link to folder in the file system**. Click **Browse....** and choose the "AllJavaSourceFiles" directory.



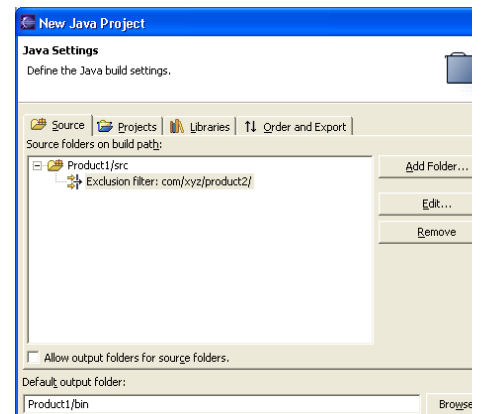
Click **OK** twice to close the two dialogs.

Expand the "src" source folder. Select **Exclusion filters** and click **Edit...**

Click **Add....** Type "com/xyz/product2/" in the **Add Exclusion Pattern** dialog.

Click **OK** twice to close the two dialogs.

Type "Product1/bin" in the **Default output folder** field.

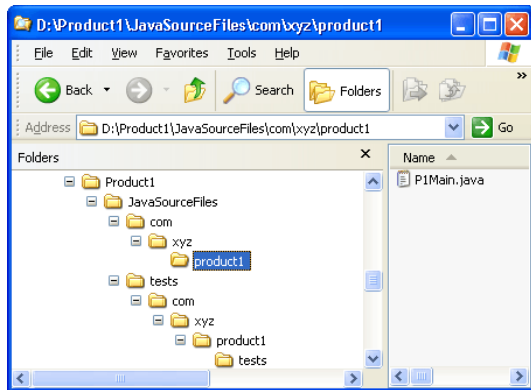


Click **Finish**.

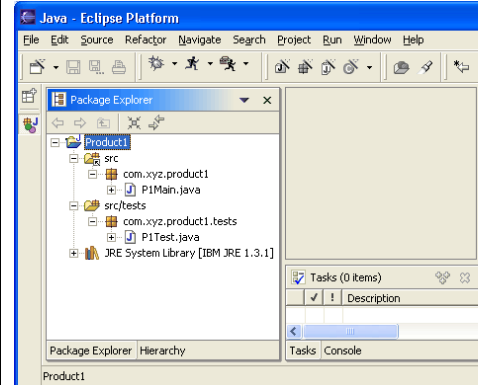
Repeat these **steps** for "Product2", excluding "com/xyz/product1/" instead.

## Product with nested tests

START: The Java source files for a product are laid out in package directory like this:



END: You now have a Java project with a "src" folder and a "tests" folder which contain respectively the "JavaSourceFiles" directory and the "tests" directory.

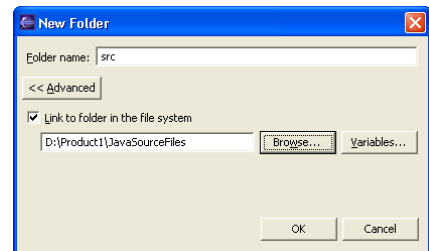


On the next page, type "Product1" in the **Project name** field. Click **Next**.

Select "Product1" source folder and click **Edit**....

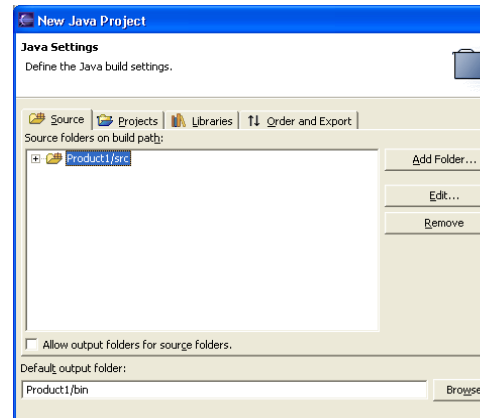
Click **Create New Folder**.... Type "src" in the **Folder name** field.

Click **Advanced**. Check **Link to folder in the file system**. Click **Browse**.... and choose the "JavaSourceFiles" directory.



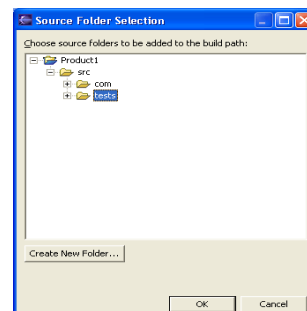
Click **OK** twice to close the two dialogs.

Type "Product1/bin" in the **Default output folder** field.



Click **Add Folder**....

Expand "Project1", then "src" and select "tests".



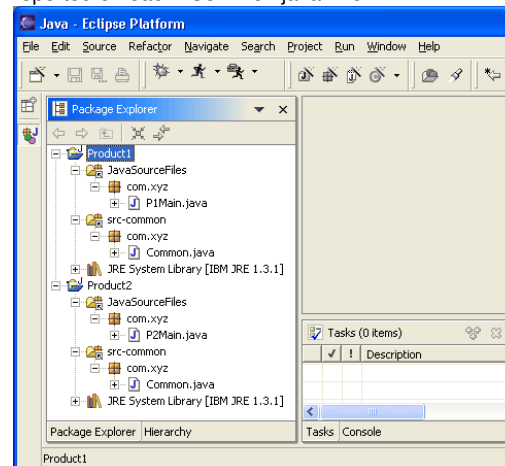
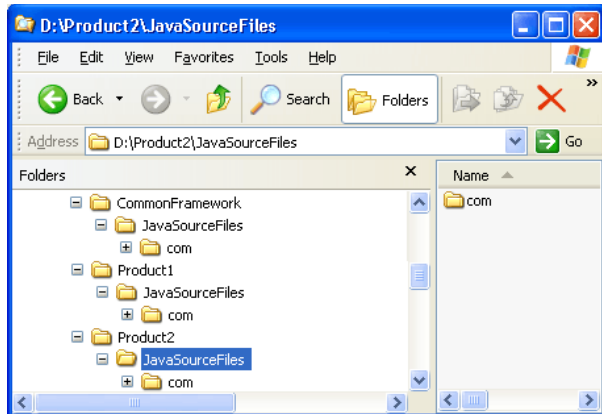
Click **OK**. You get an information dialog saying that exclusion filters have been added. Click **OK**. Click **Finish**.

## Products sharing a common source framework

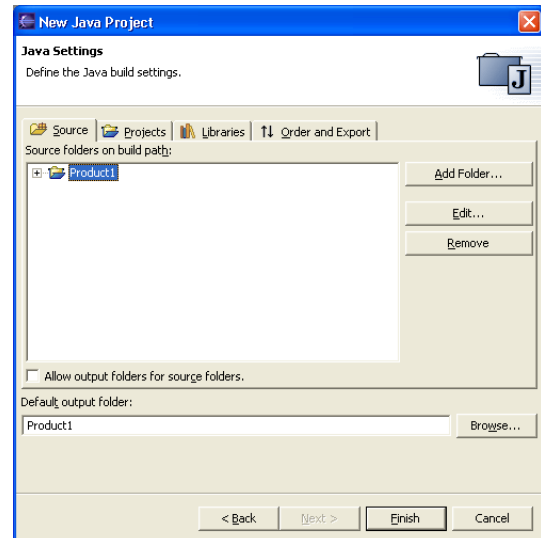
START: The Java source files for two products require a common framework:

END: You now have two Java projects which respectively contain the sources of "Product1" and "Product2" and which are using the sources of "CommonFramework".

*Note:* Files in "src-common" are shared. So editing "Common.java" in "Product1" will modify "Common.java" in "Product2". However they are compiled in the context of their respective projects. Two "Common.class" files will be generated; one for each project. If the two projects have different compiler options, then different errors could be reported on each "Common.java" file.



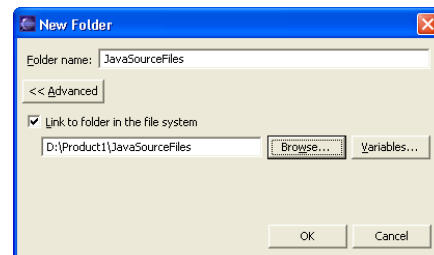
On the next page, type "Product1" in the **Project name** field. Click **Next**.



Select "Product1" source folder and click **Edit...**

Click **Create New Folder....** Type "JavaSourceFiles" in the **Folder name** field.

Click **Advanced**. Check **Link to folder in the file system**. Click **Browse....** and choose the "JavaSourceFiles" directory in "Product1".

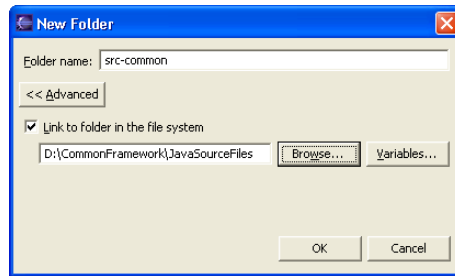


Click **OK** twice to close the two dialogs.

Click **Add Folder....**

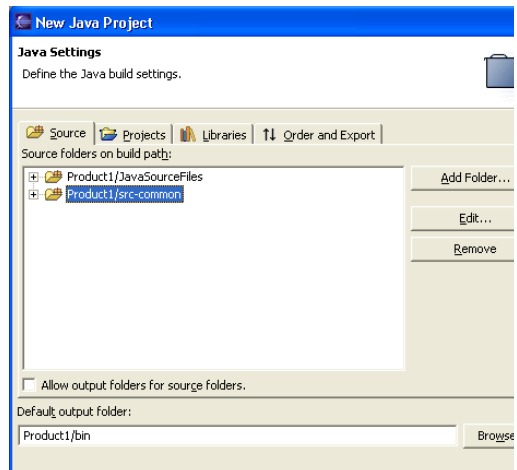
Click **Create New Folder....** Type "src-common" in the **Folder name** field.

Click **Advanced**. Check **Link to folder in the file system**. Click **Browse....** and choose the "JavaSourceFiles" directory in "CommonFramework"



Click **OK** twice to close the two dialogs.

Type "Product1/bin" in the **Default output folder** field.



Click **Finish**.

Repeat these steps for "Product2".